

Low spin washing machine RC 30

C030913C

Technical data

Capacity	30	kg
Drum diameter	880	mm
Drum depth	523	mm
Drum volume	318	l
Load diameter	400	mm
Wash speed	32	rpm
Low speed	450	rpm
G Factor	100	
Noise	65	dB(A)
Heating leaks from the structure**	5	%

Weights and packing dimension

Height	1750	mm
Width	1300	mm
Depth	1300	mm
Volum	3	m ³
Gross weight	590	kg
Net weight	565	kg

Water consumpt

Total consumption	511	litri
Low level	120	litri 7 cm
High level	127	litri 9 cm

Electrical heating

Heating element	6 x 4000	W
Consumption*	12	kWh

Steam heating

Steam consumption*	20	kg
Max pressure***	4,5	bar

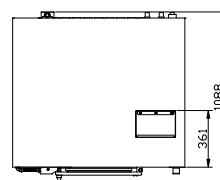
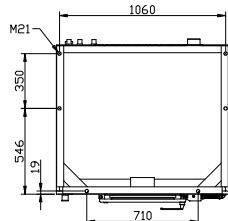
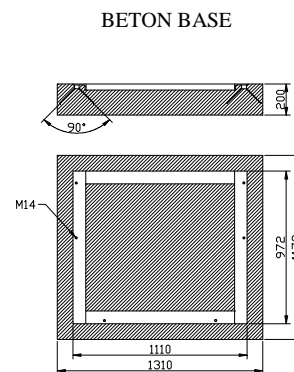
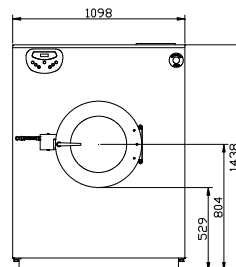
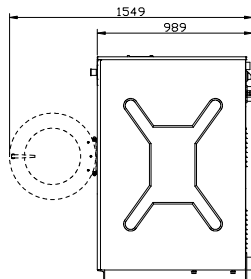
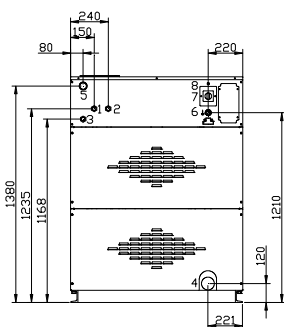
* Cycle B - ISO 9398

** Percentage on installed power

*** Optional 10 bar

Power and absorptions

Heating	Supply	Total power	Absorption
Elettrico	3ph 400V+N	28 kW	46 A
Elettrico	3ph 230V	28 kW	79 A
Elettrico	1ph 230V	NO kW	NO A
Vapore/Hot Water	3ph 400V+N	4 kW	11 A
Vapore/Hot Water	3ph 230V	4 kW	19 A
Vapore/Hot Water	1ph 230V	NO kW	NO A



- 1 - Cold water inlet 3/4" - Press 0,5 ÷ 10 bar
- 2 - Hot water inlet 3/4" - Press 0,5 ÷ 10 bar
- 3 - Steam inlet 3/4"
- 4 - Drain Ø80 mm
- 5 - Bleed
- 6 - Electrical power
- 7 - External connections
- 8 - Fuse

DISTANCE
BETWEEN FIXING
BOLTS

FRONT

DISTRIBUTOR

IMESA S.p.A.

Via Degli Olmi, 22 - 31040 CESSALTO (TV) - ITALY

Tel. +390.421.46.80.11 - Fax +390.421.46.80.00

Internet address: www.imesa.it - E-Mail: imesa@imesa.it

